

Construction Truck

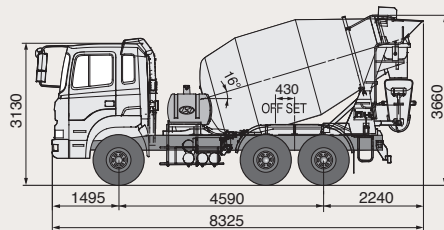
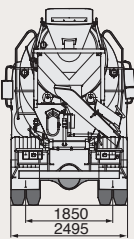
Mixer Truck



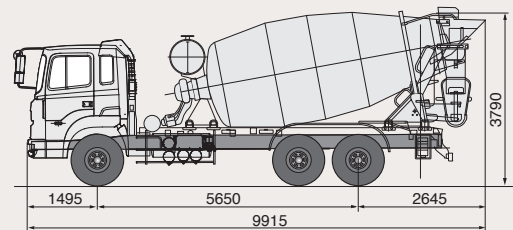
HD270



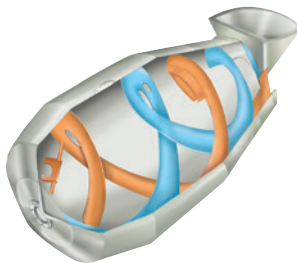
Rear view



HD270 (7m³)



HD370S (9m³)



< Drum interior >



Spiral / Fins

Drum / Barrel

Nose Cone

Hopper

Scoop

Chute

Sub-frame

Body (7m³/9m³)



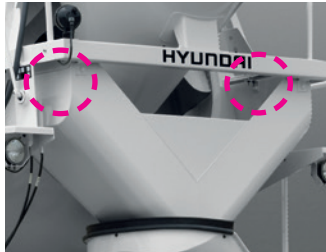
Sub-frame
7m³ / 9m³ Mixer
HD 270 / 370S
Include rear fixed steps
(both side)

Note: 7m³/9m³ Standard



Hopper
7m³ / 9m³ Mixer
HD 270 / 370S
Hopper Thickness : 2.3mm
Reinforcement plate 4mm

Note: 7m³/9m³ Standard



Scoop
7m³ / 9m³ Mixer
HD 270 / 370S
Scoop Thickness : 2.3mm
* Two washing nozzles at each
side

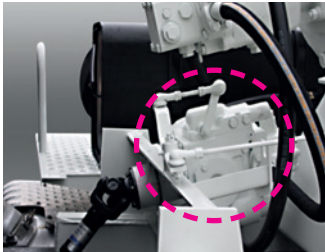
Note: 7m³/9m³ Standard



Chute
7m³ / 9m³ Mixer
HD 270 / 370S
Chute Thickness : 2.3mm
Reinforcement plate 4mm
* The chute has an extension
chute

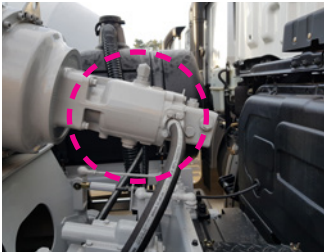
Note: 7m³/9m³ Standard

Body (7m³/9m³)



Hydraulic pump
7m³ Mixer
HD 270
Bosch Rexroth
Model : A4VTG071(71cc)

Note: 7m³ Standard



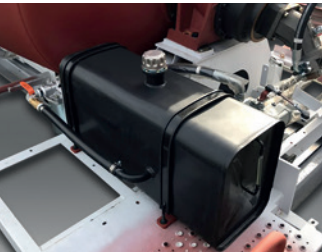
Hydraulic motor
7m³ Mixer
HD 270
Bosch Rexroth
Model : A2FM63(63cc)

Note: 7m³ Standard



Rear fender (2 types)
7m³ Mixer
HD 270

Note: 7m³ : Plastic
9m³ : Steel



Oil tank
7m³ Mixer
HD 270
80ℓ

Note: 7m³ Standard



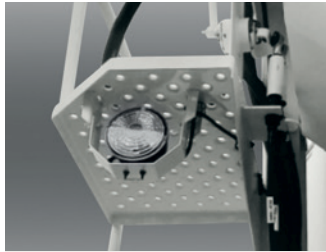
Water pump
7m³ / 9m³ Mixer
HD 270 / 370S
* The water pump has a heating
system for winter season

Note: 7m³/9m³ Standard



Control panel (LH)
7m³ / 9m³ Mixer
HD 270 / 370S
Water Proof Button Type
3 bottoms (RPM control, Water
pump, Buzzer) + 2 Water Valves

Note: 7m³/9m³ Standard



Working lamp (rear)
7m³ / 9m³ Mixer
HD 270 / 370S
Switch in the cabin

Note: 7m³/9m³ Standard



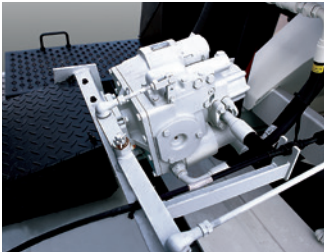
**Control lever
(LH, RH, Upper LH)**
7m³ / 9m³ Mixer
HD 270 / 370S

Note: 7m³/9m³ Standard



Water tank
9m³ Mixer
HD370S
* Steel (450ℓ)

Note: 9m³ Standard



Hydraulic pump
9m³ Mixer
HD370S
Danfoss (100cc)

Note: 9m³ Standard



Reduction gear
9m³ Mixer
HD370S
ZF reduction gear (model :
CML10) (Integrated with
hydraulic motor)

Note: 9m³ Standard



Oil cooler
9m³ Mixer
HD370S
It consists of oil tank,
oil filter, and cooling fan

Note: 9m³ Standard



Ladder
7m³ / 9m³ Mixer
HD 270 / 370S

Note: 7m³/9m³ Standard



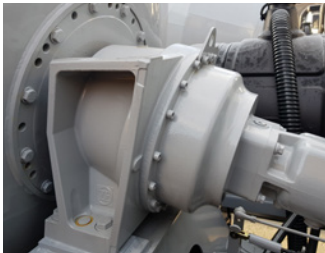
Washing hose
7m³ / 9m³ Mixer
HD 270 / 370S
* Washing Hose (2ea) :
Rear + Beside the hopper

Note: 7m³/9m³ Standard



Water tank
7m³ Mixer
HD 270
Plastic tank (350ℓ) with a
strainer

Note: 7m³ Standard



Reduction gear
7m³ Mixer
HD 270
ZF
Model : P-3301

Note: 7m³ Standard

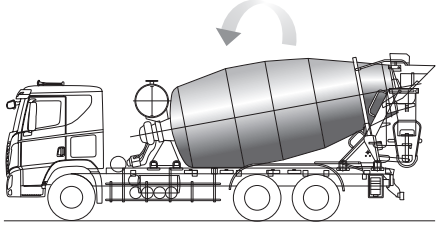
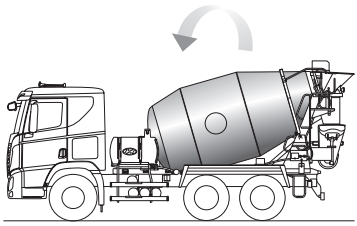


HARDOX drum & blade 7m³ Mixer Truck

(2~3 times improved in drum & blade durability)

For more detailed information
please contact special vehicle team



Dry- and Wet-type 9m³ Mixer Trucks

| | DRY-TYPE | WET-TYPE |
|-------------------|--|--|
| Type | Loads and transports cement/sand/gravel, which are mixed with water and discharged for use in the field | Transports ready-mixed concrete |
| | - | 7 cubic meters |
| | 9 cubic meters (specific order is required in regions and countries where the wet type operation is used) | |
| | Sand / Coarse / Water / Cement | Ready Mixed Concrete |
| |  < Dry-type 9m³ > |  < Wet-type 7m³ / 9m³ > |
| Charging Cylinder |  |  |
| Drum | Charging Cylinder (X) | Charging Cylinder (O) |
| Hopper | Long Slide guide (500mm) | Short Slide guide (120mm) |
| Connect | Open-type | Close-type |
| Config. | Standard | Option |
| Pros / Cons | Suitable for dry-type use | Suitable for wet-type use |
| | Interference is minimized when loading concrete materials | The overflow of ready-mixed concrete is minimized when travelling on the ramp |
| | Ready-mixed concrete could overflow when wet-type is used | Dry-type use could cause interference |

* Customers requiring wet-type must place a special order otherwise, mixers are generally manufactured as dry-type

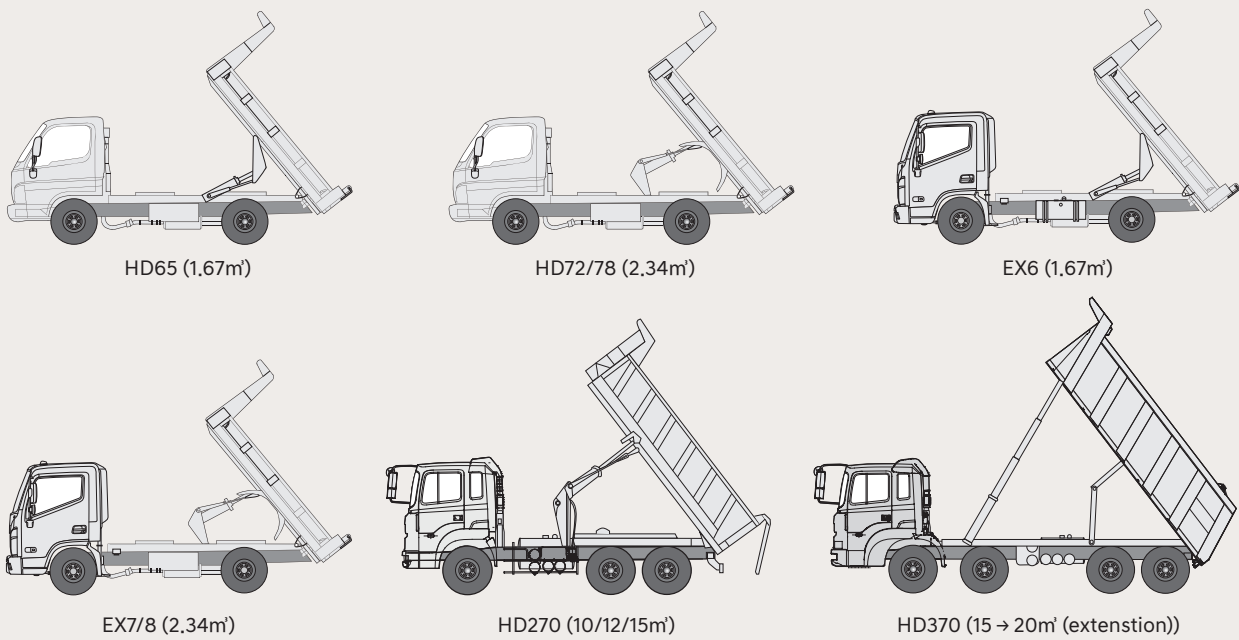
Construction Truck
Dump Truck



- Dump trucks manufactured at Hyundai Motor’s Jeonju Plant in Korea
- HD170 (5.34m³) / HD270 (10m³) / HD370 (15.67m³) / Xcient 6x4 (10m³)
- PTO is a mandatory option when ordering dump trucks



Line-up



Body



Dumping system

Dump
* It differs according to vehicle types. Please check the reference

Note: [Standard](#)



Deck

Dump
HD65/72/78, EX6/7/8
Material : SS400 + SM50A

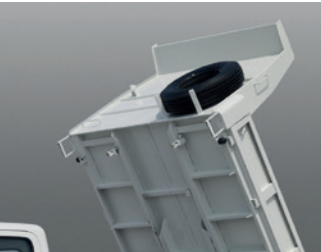
Note: [Standard](#)



Deck side gate

Dump
HD65/72/78, EX6/7/8

Note: [Standard](#)



Spare tire

Dump
HD65/72/78, EX6/7/8
HD72 and above include tire unloading winch system

Note: [Standard](#)



Crossmember frame

Dump
Above HD260

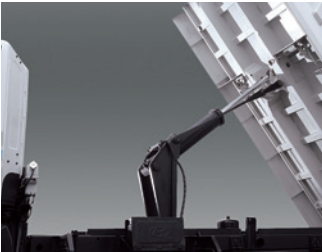
Note: [Standard](#)



Safety stopper

Dump

Note: [Standard](#)



Cylinder

Dump

Note: [Standard](#)



Dump lever (pull turn type)

Dump
HD65 ~ HD72

Note: [Standard](#)



Dump lever (lever Type)

Dump
EX6/7/8, HD270~HD370

Note: [Standard](#)



Tailgate hinge

Dump
HD260~HD370

Note: [Standard](#)



Deck extension

Dump
HD65 / HD370

Note: [Option 1](#)



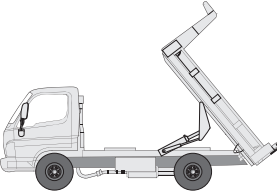
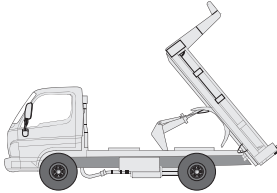
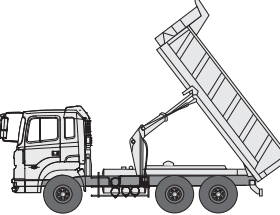
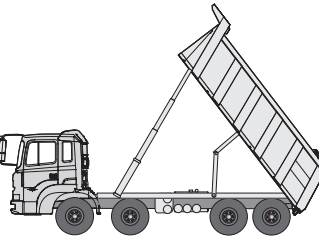
GCC side guard rail

Dump
HD65 / 72
GCC countries only

Note: [Option 2](#)

Body

Hydraulic Cylinder Reference Guide

| GARWOOD TYPE | ORIGINAL MARREL TYPE | | TELESCOPIC TYPE |
|---|---|---|---|
|  |  |  |  |
| HD65/EX6 | HD72/78, EX7/8 | | HD270 |
| | | | HD370 |

Line-up

| | | HD65/EX6 | HD72/78, EX7/8 | HD270 | | |
|------|--------------------|--------------------------------------|--|---------------------|-----------------------|-----------------------|
| Deck | Height (mm) | 3,100 x 1,860 x 290 | 3,200 x 1,900 x 385 | 4,820 x 2,300 x 915 | 4,820 x 2,300 x 1,100 | 4,820 x 2,300 x 1,370 |
| | Volume | 1.67m³ | 2.34m³ | 10m³ | 12m³ | 15m³ |
| | Dumping system | Garwood | Marrel | Marrel | | |
| | Dumping angle | 52° | 53° | 53° | | |
| | Material | SS400 | | SS400 | | |
| | Thickness (mm) | Front/Rear/Side : 2.3 Floor : 3.2 | Front: 2.3 Rear/Side : 3.2 Floor : 4.5 | 4.5 | | |
| | ATOS 590 (mm)_Opt. | Front/Rear/Side : 4.5 Floor : 6.0 | Front: 2.3 Rear/Side : 4.5 Floor : 6.0 | - | | |

Option 1

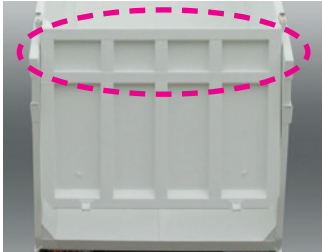
- Contact Special Vehicle Team for more information about Deck Extension





Deck Side Extension



Deck Rear Extension



Dump Extension

| | | HD65 | | | HD370 | | |
|------|--------------------|--------|---|-------|-------|---|--------------|
| Deck | Dimension (height) | 290 |  | 400 | 1,305 |  | 1,700 (+395) |
| | Volume | 1.67m³ | | 2.3m³ | 15m³ | | 20m³ |
| | Material | SM50A | | SM50A | SM50A | | ATOS60 |